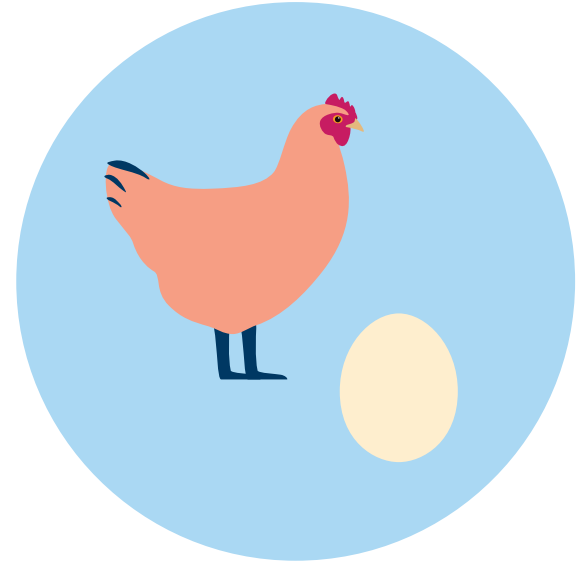


When should you not get a flu vaccine?



You had a severe allergic reaction to the flu vaccine in the past.



You are allergic to ingredients in the flu vaccine
such as preservatives (e.g. formaldehyde), antibiotics (e.g. neomycin), eggs or chicken protein.



You are exhibiting symptoms of an acute upper respiratory tract infection and have a fever. Postpone getting the vaccine for a while.



You have a fever (> 38.5°C). Postpone getting the vaccine for a while.

After receiving your vaccination, stay under medical supervision for at least 15 minutes.

Any questions or concerns? Discuss these with our medical team.